



**Darwin Initiative/D+ Project
Half Year Report
(due 31st October 2019)**

Project reference	DPLUS071
Project title	Fine scaling the design of Falkland Islands Marine Management Areas
Country(ies)/territory(ies)	Falkland Islands
Lead organisation	South Atlantic Environmental Research Institute
Partner(s)	Falkland Islands Government Fisheries Department Directorate of Natural Resources Directorate of Mineral Resources Shallow Marine Surveys Group (SMSG) British Antarctic Survey
Project leader	Dr Paul Brickle (Project Manager Dr Ander De Lecea)
Report date and number (e.g. HYR3)	31st October 2019 HYR2
Project website/blog/social media etc.	https://www.south-atlantic-research.org/research/marine-science/fine-scaling-the-design-of-falkland-islands-marine-management-areas/ @SAERI_FI

1. Outline progress over the last 6 months (April – Sept) against the agreed baseline timetable for the project (if your project has started less than 6 months ago, please report on the period since start up to end September).

Output 1: Project Management structure, monitoring, evaluation and communications tools established

1.3. A Project Management Group (PMG) meeting held every 3 months

The third PMG meeting was held on the 22nd of May 2019 as scheduled. The principal points discussed in the meeting concerned the agreement on the Term of Reference document, and the list of stakeholder to include in the project stakeholder group (see below). The fourth meeting, scheduled in August, was postponed until early November, in agreement with the schedules of all attendees. Early November is an ideal date for the next PMG, as it is before a two-week inshore fieldtrip (WP1), and after the submission of the economic study (WP3). The latter will allow us to commence the discussions on policy (WP3).

1.4. A Project Stakeholders group (PSG) meeting held every 6 months

In the Darwin+ annual report review it was highlighted that there was a need for a PSG meeting to take place. A full answer can be found in the attached document, but in short the first stakeholder meeting was held on the 22nd July 2019. Fourteen representatives from various organisations attended the meeting and were updated about the project past and future activities ([see official pdf of the presentation given to the PSG](#)). There were no issues raised by attendees at this meeting, and some of the attendees (e.g. fisheries representative), commended the large amount of work that has been conducted to date.

1.5. Web page update

New information and material (e.g. reports, presentations, etc.) have regularly been added to the webpage during the past six months. In addition, project updates have been frequently posted on twitter and Facebook (i.e. a total of 11 communications in the last semester between the two platforms).



Figure 1. Example of a twitter communication from this DPLUS071 project.

Other outreach activities

There have been opportunities over the last six months for additional activities that have provided additional value to the project. This came in the form of community Outreach activities relating to the project have been undertaken, including:

- a) 2 activities with the local kids conservation group 'The Watch Group'
 - i) 09/05/2019 – Classroom activities
 - ii) 02/06/2019 – Outdoor activities
- b) 31/05/2019 – Penguin News article on the 31st May 2019.
- c) A briefing paper was written for the Falkland Islands Governor Mr Nigel Phillips in order for him to present the MMA work in the UK.

Output 2: Work-Package 1-Data Collection Inshore

From the 15th to the 22nd of April 2019 we conducted our first intensive inshore data collection (Measurable indicators 2.1, 2.2). A full report of the expedition can be found [here](#). In brief, diving was carried out in 15 locations for a total of 31 benthic transects. A total of 290 photographs suitable for benthic classification were collected. The deep-water camera was deployed in 56 location where dives were not possible. The side-scan sonar was used to scan the bottom along 14 km in four locations. In addition, we collected tissue samples from one Peale's and three Commerson's dolphins to continue the genetic work started by the DOKE project (DPLUS042). The data for this fieldwork has already been stored as new data sets (Measurable indicator 2.3) and has been analysed (Measurable indicator 2.4). By the end of the 1st half of the 2nd year we had added a total of 21 new data sets towards the inshore work (Measurable indicator 2.3). A blog was written about the expedition ([link](#)) and one article was written in the local newspaper the Penguin News ([link](#)).

To help the project with data entry and preliminary analyses, funding provided by the Falkland Island Government, through the Environmental Studies Budget, was used to recruit an intern for 5 months (April to August). The intern helped in the expedition and analysed all the benthic photographs from the expedition (Measurable indicator 2.3 and 2.4).

Work has commenced on the megafauna data and SAERI fellow Dr Alastair Baylis has been included in the team to model the megafauna tracking data that he put together for another of SAERI's project (Measurable indicator 2.4). Dr Baylis is currently providing his time free of cost to the project,. For this aspect of the project, the focus of this data will be to look at the overlap of the tracking data and the occurrence of the MMA sites.

Finally, the sampling stations for a second inshore survey to carry out in mid-November have been selected (Figure 2).

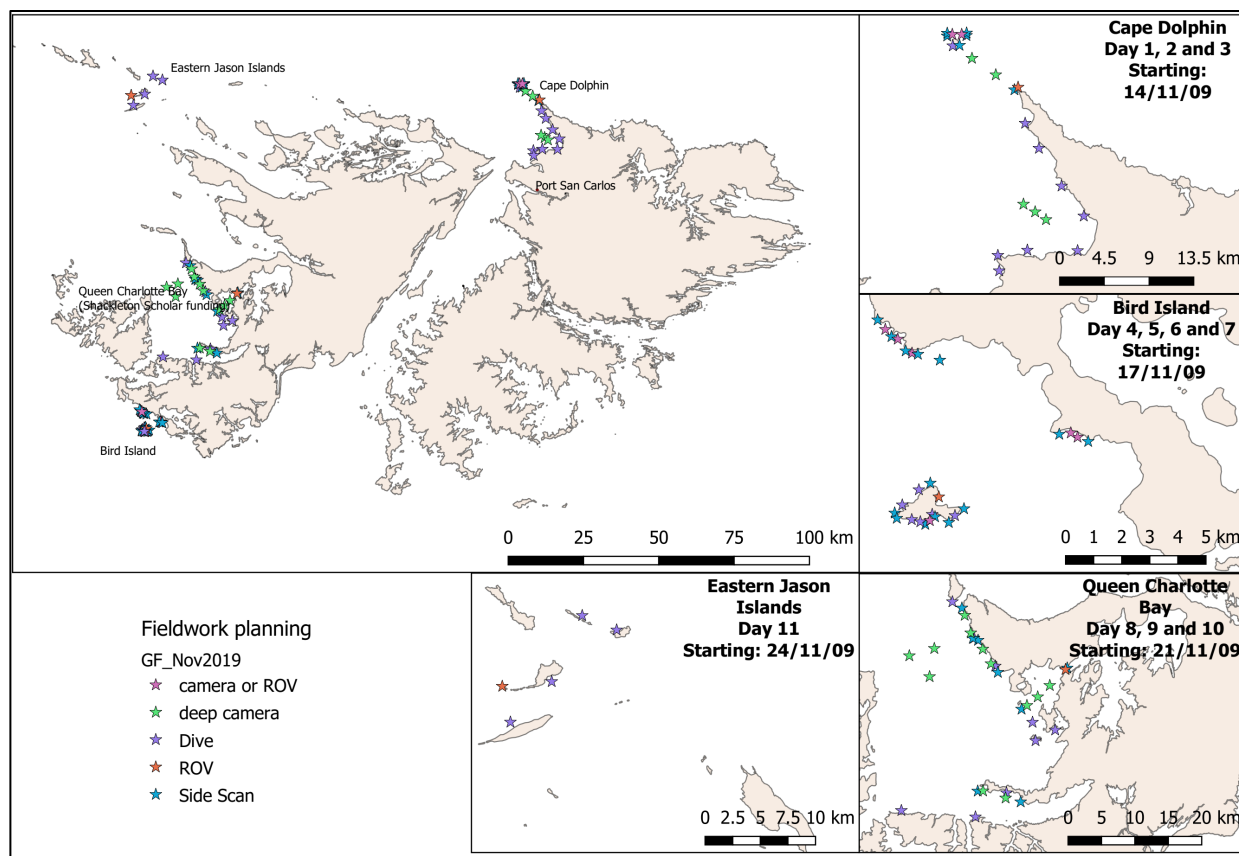


Figure 2. Map of the future inshore work taking place from mid-November 2019. The expedition was designed during the first 6 months of the second Darwin year of the project.

In addition, a great deal of work has been going into managing and improving the data collections that project partner organisation SMSG currently has in its archives, these data will contribute to the MMA project. More specifically, the project officer Dr Marina Costa has worked towards:

- a) Recovering and cleaning valuable inshore data collected by SMSG (a project partner) in the past (pre-DPLUS071 project);
- b) Insert old records in the actual database Marine Recorder;
- c) Design, along with data centre manager Dr Ilaria Marengo, a new database to include old and new data to replace the current database system used by SMSG.
 - i) All of these goals are highly relevant to WP1, but will be also of great value to project partners (such as SMSG) and for future research in the Falkland Islands.

Output 3: Work-Package 2-Data Collection Offshore

The survey design for the offshore expedition to carry out in January 2020 has been completed (Figure 3) (Measurable indicator: 3.2).

Data from the past expedition have been cleaned and six new data sets have been generated (Measurable indicator 3.3). For logistic reasons due to the remoteness of the area, there was a delay in the transfer of some specimens from the Falkland Islands to UK and from there to other project partners (explained in the annual report).

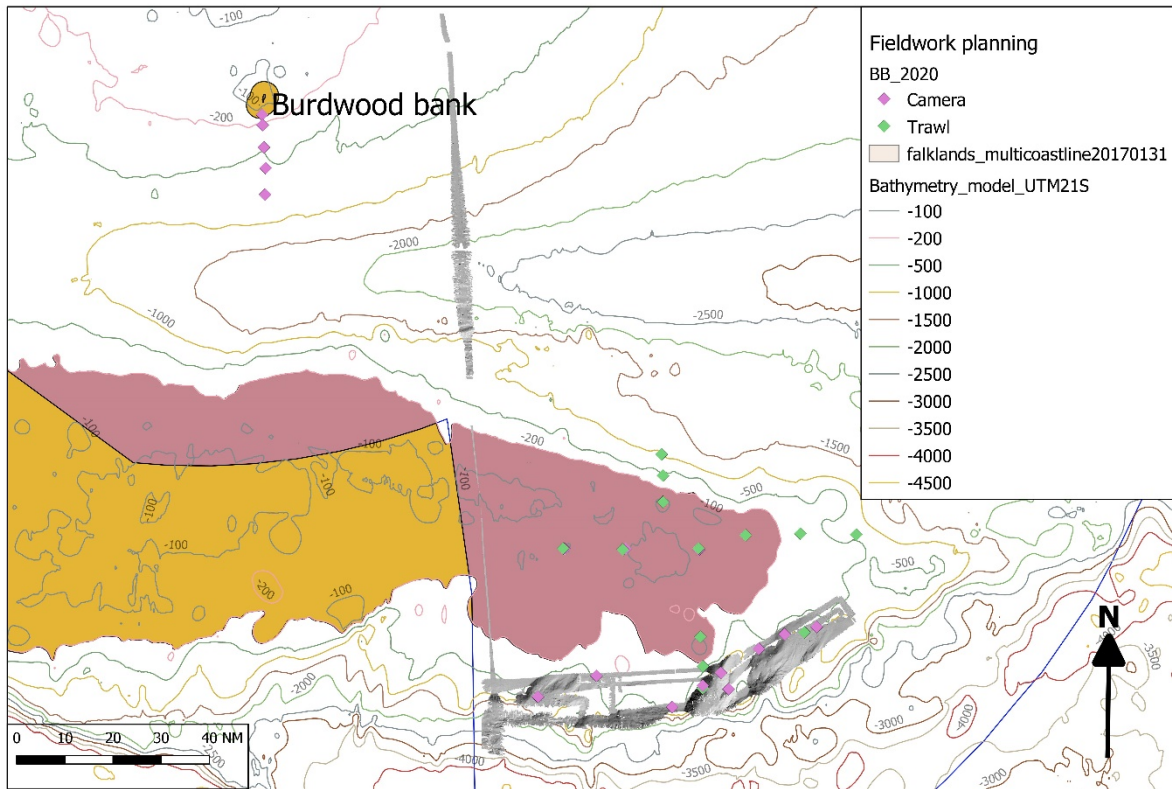


Figure 3. Currently proposed draft offshore fieldwork for January 2020. Grey shows the multibeam footprint from the 2018 expedition.

Output 4: Work-Package 3- Designing the MMAs

The first economic report from the economic study was completed by the end of September 2019 (Measurable indicator 4.2). It will be presented to the PMG in November 2019 allowing for the MMA policy phase to move forward (Measurable indicator 4.5).

Additionally, the project manager has worked on writing a review of IUCN categorized regions in the South Atlantic (although not part of a work-package per se, highly relevant to WP3). This was done in order to understand how other neighbouring countries have worked towards achieving these goals.

2a. Give details of any notable problems or unexpected developments/lessons learnt that the project has encountered over the last 6 months. Explain what impact these could have on the project and whether the changes will affect the budget and timetable of project activities.

As with most projects, there have been some problems/unexpected developments over the last 6 months. Outlined here is the challenge that arose and the solution that has been implemented to address this.

Challenge: During some collaborative fieldwork with the Coastal Mapping Project (DPLUS065) the underwater remotely operated vehicle (hereafter ROV) was tangled in the vessels propeller resulting in a minor cable damage.

Solution: A local marine engineer is going to reattach the cables (free of cost); the cable then needs to be sealed with a special epoxy resin. The require resin to fix the damaged cable only costs c. £30. Shipping the resin from the UK to the Falkland Islands has proven challenging due to the resin being labelled as corrosive. Such items cannot be posted by air. However, we

have tracked people's movements to enable 'fast track' hand carrying to speed up the shipping process. The ROV should therefore be fixed by the next inshore expedition.

Lessons learnt: A valuable lesson was learnt and a more robust protocol for ROV use was established. This will also help other researchers working with similar tools.

We are also preparing a small change request, which mainly moves money within lines in order to extend the contract of the project officer. Her work during field campaigns has proven highly valuable, and losing her prior to the next two field campaigns would have impacted the project considerably.

2b. Have any of these issues been discussed with LTS International and if so, have changes been made to the original agreement?

Discussed with LTS:	Yes
Formal change request submitted:	No
Received confirmation of change acceptance	No

3a. Do you currently expect to have any significant (e.g., more than £5,000) underspend in your budget for this year?

Yes No Estimated underspend: £

3b. If yes, then you need to consider your project budget needs carefully. Please remember that any funds agreed for this financial year are only available to the project in this financial year.

If you anticipate a significant underspend because of justifiable changes within the project, please submit a rebudget Change Request as soon as possible. There is no guarantee that Defra will agree a rebudget so please ensure you have enough time to make appropriate changes if necessary.

We do not anticipate any underspend.

4. Are there any other issues you wish to raise relating to the project or to Darwin's management, monitoring, or financial procedures?

No, the Darwin team has been supportive during financial procedures.

If you were asked to provide a response to this year's annual report review with your next half year report, please attach your response to this document. Additionally, if you were funded under R25 and asked to provide further information by your first half year report, please attach your response as a separate document.

Please note: Any planned modifications to your project schedule/workplan can be discussed in this report but **should also be raised with LTS International through a Change Request. **Please DO NOT send these in the same email.****

Please send your **completed report by email** to Darwin-Projects@ltsi.co.uk. The report should be between 2-3 pages maximum. **Please state your project reference number in the header of your email message e.g. Subject: 25-035 Darwin Half Year Report**